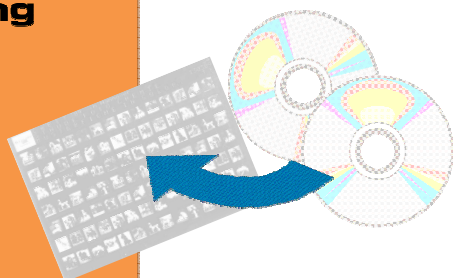


digi-fiche



The conversion system - digital to analog - with proven CIE process

Invest in this unique safety and cost-effective long-term storage medium safeguarding the future.

The Stäude digi-fiche fully and automatically converts your digital data to micro fiche.

The roll film used is a high quality 105 mm microfilm, specially optimized for our system. The micro cut-film is automatically be cut from the 60 m film roll and is exposed with data and title (company's logo, three line text, fiche number) and is afterwards automatically processed.

The micro fiches remain readable for hundreds of years, when properly processed (by using the special Stäude film-chem-kit) and stored under controlled conditions.

Latest electronics, sophisticated mechanics and chemistry especially developed for this system result in a high quality standard.

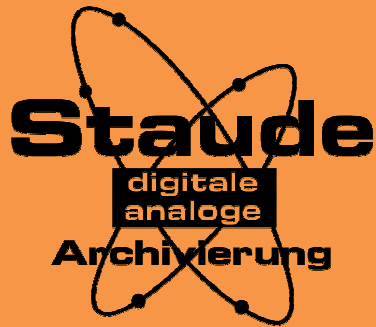
While you are working with your digital data in familiar environments, the Stäude digi-fiche facilitates long-term storage of your data.

The Stäude digi-fiche handles nearly all digital formats (up to A2 images) and can be adapted to your existing archive.



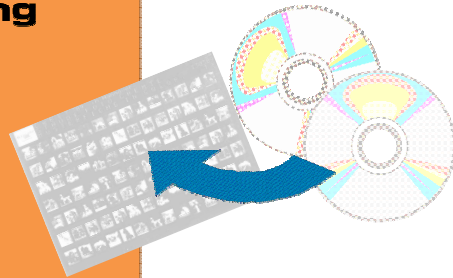
The Stäude digi-fiche is a perfect partner for your long-term archive. Create the microfiches directly after scanning or import your digital documents, which have been already stored on any storage medium, by means of the archiving software.

You have your digital documents in your network !
No problem – the Stäude digi-fiche is prepared for use in networks. A fully automatic guardian scans each image transaction in the network and induces the archiving in case of need.



digi-fiche

The conversion system – digital to analog



Technical Data

- Fully automatic conversion, digital to analog
- Input:
All raster-image files i.e. TIFF, JPEG and PDF up to image size A2
- Output:
105 mm fiche with up to 392 exposures
- Proven color image enhancement process (CIE) for perfect detailed reproduction of a color image
- Complete workplace, including Windows workstation
- Processing speed: up to 5.000 images per hour 50x, 3.300 images at 42x or 2.500 images at 25x
- Title input variable
- Processing unit integrated
- Existing data on different storage media can be processed in the same way as current images in an active workflow
- Dimensions D/W/H cm: 95/132/110 (without workstation)

Options

- Index
- Exposure of coordinates
- Various grids and reductions (25x, 42x and 50x)

Additional products made by Staude:

environmental friendly microfilm chemicals.

for converting digital files to 16 mm or 35 mm roll film

Eco processing chemicals
Staude file-converter

Staude Foto Chemie

Soedeler Weg 2 – 61200 Woelfersheim, GERMANY, Tel.: +49 6036-908-0,
Fax: +49 6036-90844, eMail: info@e-staude.com, internet: www.e-staude.com